

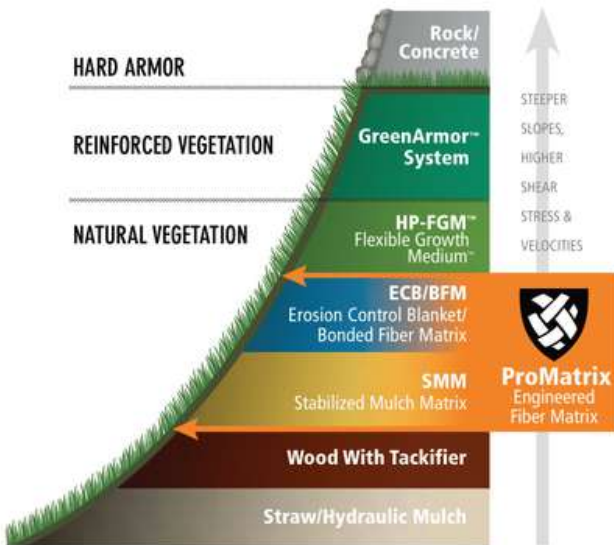


Superior Performance at a Competitive Price

 **ProMatrix**[™]
Engineered Fiber Matrix[™]



A better alternative to BFM/SMM products



ProMatrix™ with patented Engineered Fiber Matrix™ (EFM™) technology was created to give you an edge when bidding on jobs requiring BFM/SMM hydraulic products. Not only does ProMatrix assure the erosion control and vegetative establishment you expect from Profile Products, it's available at a competitive price. You get superior performance and sustainable results, in an easy-to-apply and cost-effective solution.

ProMatrix is not a replacement for the ultimate performance of Flexterra® HP-FGM™. However, Engineered Fiber Matrix technology does make it the highest performing, cost-effective solution for projects requiring a BFM/SMM product.

PROMATRIX ENGINEERED FIBER MATRIX TECHNOLOGY DELIVERS:

- **HIGHEST-LOADING FORMULATION** with BFM performance; 60 pounds per 100 gallons (27.2 kg/379 L) of water
- **CLASS LEADING** erosion control effectiveness meets or exceeds all industry testing standards for BFM/SMM products
- **LASTING PERFORMANCE** with a Functional Longevity of up to 12 months
- **QUICK GERMINATION** and rapid vegetative establishment
- **ENVIRONMENTALLY SAFE**; it's non-toxic, contains 100% recycled wood fibers and is 100% biodegradable

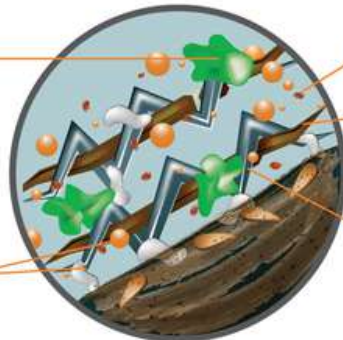
ENGINEERED FIBER MATRIX TECHNOLOGY: GREEN BY DESIGN

Profile® applied its Green Design Engineering™ expertise and incorporated many of the technologically advanced components found in Flexterra HP-FGM when developing ProMatrix EFM. These components include:

Unique to this technology:
Proprietary Dispersion Granules:

Ensure the chemistry is thoroughly mixed and uniformly distributed
 Effectively contribute to smooth, even shooting, which speeds application

100% non-toxic biopolymers and water absorbents further enhance performance



Advanced Micro-Pore particles optimize water and nutrient retention

100% recycled Thermally Refined® wood fibers that not only produce the highest coverage per pound, they are also phyto-sanitized, eliminating weed seeds and pathogens

100% biodegradable interlocking crimped fibers to help increase strength and matrix durability



Ecoscape Solutions supply and install ProMatrix in Australia



To enquire, get in touch with Mick: call 1800 ECOSCAPE or email info@ecoscapecolutions.com.au

GAME-CHANGING ADVANTAGES



SAVES YOU TIME. CONSERVES WATER.

With a mixing rate of 60 pounds per 100 gallons (27.2 kg/379 L) of water, ProMatrix is the highest-loading product in its class. This decreases the number of trips to get water, which saves you time and helps to reduce water usage.

PRODUCT MIXING RATE		NUMBER OF BALES FOR MACHINE SIZE		
		800 gal (3,028 L)	1500 gal (5,678 L)	3000 gal (11,356 L)
ProMatrix EFM	60 lb/100 gal (27.2 kg/379 L)	10	18	36
Atmospheric Wood BFM	50 lb/100 gal (22.7 kg/379 L)	8	15	30
Straw/Cotton based products	50 lb/100 gal (22.7 kg/379 L)	8	15	30



20% Fewer Tank Loads Per Job



Quick and easy loading



Consistent slurry



Smooth shooting

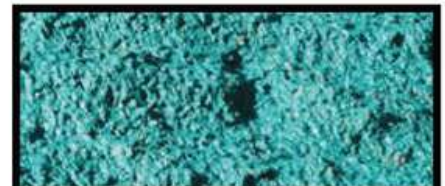
SPEEDS APPLICATION. Proprietary Dispersion Granules facilitate even distribution of the fibers and chemistry to ensure smooth slurry pumping and shooting.

GREATER CONFIDENCE. ProMatrix Engineered Fiber Matrix (EFM) technology immediately bonds to the soil surface and effectively reduces turbidity of runoff for up to 12 months.

TRUSTED TECHNOLOGY. Patented EFM technology promotes rapid germination and vegetative establishment with a 600% minimum increase in initial germination.

100% ENVIRONMENTALLY SAFE. Engineered Fiber Matrix technology is non-toxic and incorporates biodegradable, recycled and phyto-sanitized components with no nettings, threads or staples to endanger wildlife.

IMPROVES YOUR PROFIT POTENTIAL. Consult with your Profile Products distributor about all the cost-effective advantages of ProMatrix EFM—the superior performing hydraulic solution that will change your environment.



Superior coverage



Excellent establishment



Ecoscape Solutions supply and install ProMatrix in Australia



To enquire, get in touch with Mick: call 1800 ECOSCAPE or email info@ecoscapecolutions.com.au



Profile's 5 Fundamentals for establishing sustainable vegetation take the guesswork out of crucial decisions that need to be made to ensure you achieve your Notice of Termination as quickly and efficiently as possible.

Having the correct foundation in place from the start makes all the other choices you make that much easier and effective. Start with a FREE soil test through PS³.



Assessing and Creating Optimal Soil Conditions



Picking the Right Plant Species



Selecting the Correct Erosion Control Material



Ensuring Proper Installation



Follow-up Inspections and Maintenance Practices

Profile Products is available to conduct training on The 5 Fundamentals™ to assure success on your erosion control and vegetative establishment projects.

TECHNICAL DATA

Physical Properties*	Test Method	Tested Value (English)	Tested Value (SI)
Thickness	ASTM D6525 ¹	≥ 0.16 inch	≥ 4 mm
Ground Cover	ASTM D6567 ¹	≥ 98 %	≥ 98%
Mass/Unit Area	ASTM D6566 ¹	≥ 11.6 oz/yd ²	≥ 390 g/m ²
Water-Holding Capacity	ASTM D7367	≥ 1,400%	≥ 1,400%
Material Color	Observed	Green	Green
Performance Properties*			
Cover Factor ²	Large Scale ⁴	≤ 0.05	≤ 0.05
Percent Effectiveness ³	Large Scale ⁴	≥ 95 %	≥ 95 %
Cure Time	Observed	4 – 24 hours	4 – 24 hours
Vegetation Establishment	ASTM D7322 ¹	≥ 600%	≥ 600%
Functional Longevity ⁵	ASTM 5338	≤ 12 months	≤ 12 months
Environmental Properties*			
Ecotoxicity	EPA 2021.0	48-hr LC ₅₀ > 100%	48-hr LC ₅₀ > 100%
Biodegradability	ASTM D5338	Yes	Yes
Product Composition		Typical Value	
Thermally Processed ⁶ (within a pressurized vessel) Virgin Wood Fiber		77%	
Wetting Agents - including high-viscosity, colloidal polysaccharides, crossed-linked biopolymers and water absorbents (>10% of total formulation)		18%	
Crimped, Biodegradable Interlocking Fibers		2.5%	
Micro-Pore Granules		2.5%	

*When uniformly applied at a rate of 3,500 pounds per acre (3,900 kilograms/hectare) under laboratory conditions.

1. ASTM test methods developed for Rolled Erosion Control Products that have been modified to accommodate Hydraulic Erosion Control Products.
2. Cover Factor is calculated as soil loss ratio of treated surface versus an untreated control surface.
3. % Effectiveness = One minus Cover Factor multiplied by 100%.
4. Large scale testing conducted at Utah Water Research Laboratory and Texas Transportation Institute. For specific testing information please contact a Profile technical service representative at 800-508-8681.

5. Functional Longevity is the estimated time period, based upon ASTM D5338 testing and field observations, that a material can be anticipated to provide erosion control and agronomic benefits as influenced by composition, as well as site-specific conditions, including; but not limited to—temperature, moisture, light conditions, soils, biological activity, vegetative establishment and other environmental factors.

6. Heated to a temperature greater than 380 degrees Fahrenheit (193 degrees Celsius) for 5 minutes at a pressure greater than 50 psi (345 kPa) in order to be Thermally Refined®/Processed and to achieve phytosanitization.



PS³, Profile's unique online project design

and management software, is the best place to start applying The 5 Fundamentals™ to your next project. The process begins with a FREE soil test, and walks you through every Fundamental. It's the only program of its kind that integrates and compares a variety of manufacturers' products to your specific project parameters, and provides complete documentation including product specifications, installation guidelines, CAD details and other pertinent technical information. Get started by visiting ProfilePS3.com.



GREEN DESIGN ENGINEERING™
EARTH-FRIENDLY SOLUTIONS FOR SUSTAINABLE RESULTS™

Green Design Engineering™ is a holistic approach, combining environmentally beneficial design and ecologically sound products with agronomic and erosion control expertise, to provide the most effective, customized and cost-efficient solutions for erosion control and vegetative establishment.



Solutions for your Environment[®]

For technical information or distribution, please call 800-508-8681.
For customer service, call 800-366-1180.

© 2017 PROFILE Products LLC.
All rights reserved.
For warranty information, visit www.profileproducts.com.

750 W. Lake Cook Road • Suite 440
Buffalo Grove, IL 60089

Flexterra, Profile and Thermally Refined are registered trademarks of PROFILE Products LLC.

ProMatrix, Green Design Engineering, GreenArmor, Earth-Friendly Solutions for Sustainable Results, Engineered Fiber Matrix, EFM, HP-FGM, Solutions for your Environment, The 5 Fundamentals and Flexible Growth Medium are trademarks of PROFILE Products LLC.

U.S. PATENT #'S: 5,741,832; 5,779,782; 5,942,029; 6,158,167; 6,360,478; 7,752,804 AND PATENTS PENDING



PM-01 06/17



Ecoscape Solutions supply and install ProMatrix in Australia



To enquire, get in touch with Mick: call 1800 ECOSCAPE or email info@ecoscapecolutions.com.au